

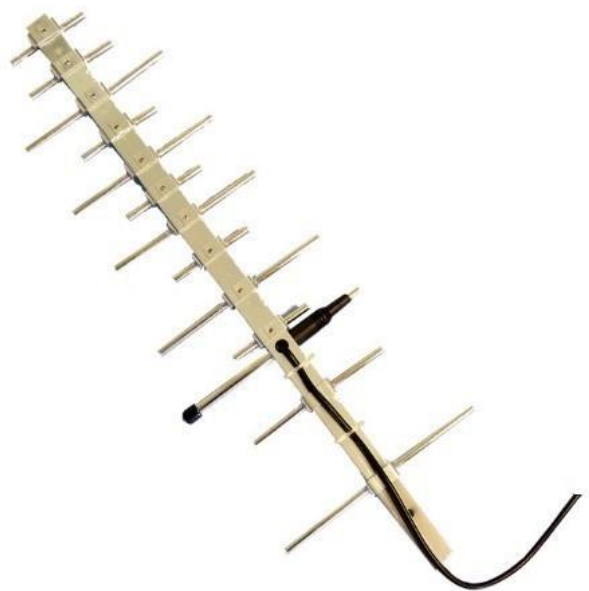


## LTE ANTENNA

Antenna LTE YAGI 140,  
14 dBi, RG58/10m, SMA(m)

AO-ALTE-YASS10

SECTRON company offers a wide portfolio of LTE antennas with various versions differing in shape, level of gain and manner of attachment. SECTRON guarantees a compatible connection between an antenna and all antenna adaptors produced by SECTRON.



### BENEFITS

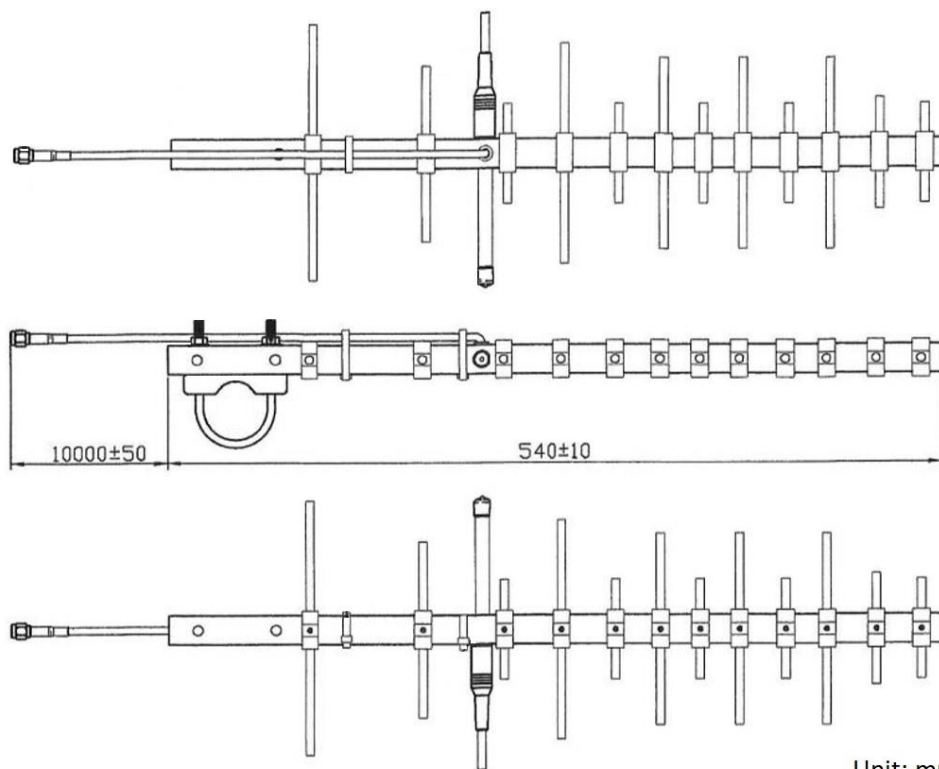
- High gain
- Directional – greater reach

## FEATURESFEATURES

Technology	GSM/UMTS/LTE
Frequency bands	700/800/900/1700/1800/1900/2100/2600 MHz
Bandwidth	-
Gain	14 dBi
VSWR	<3.4:1
Impedance	50 Ohm
Directivity	Directional
Polarization	Linear
Maximum input power	10 W
Power voltage	-
Dimensions	540 × 180 × 26.6 mm
Weight	569 g
Operating temperature	-20 to +60 °C
Execution	External
Method of attachment	Mounting
Cable type	RG58/U
The cable length	10 m
Connector type	SMA(m)
Certification	RoHS

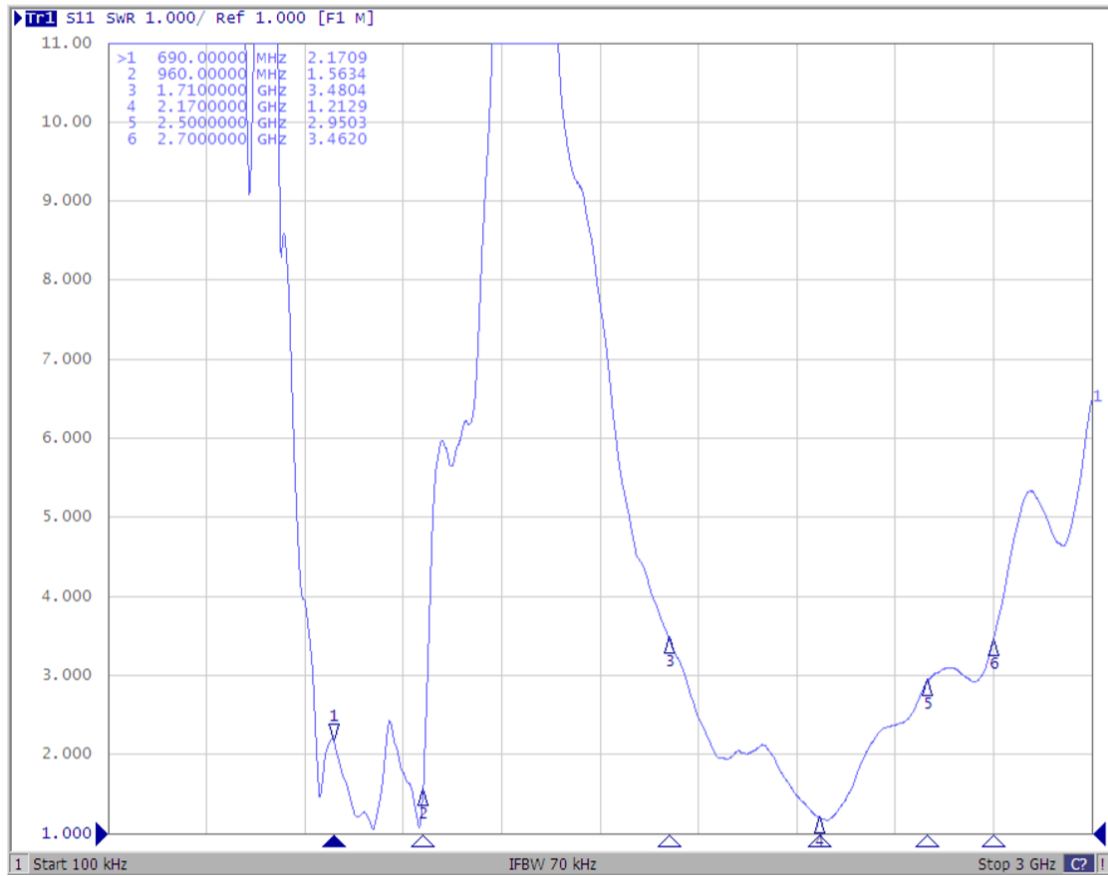
## DRAWING

AO-ALTE-YASS10

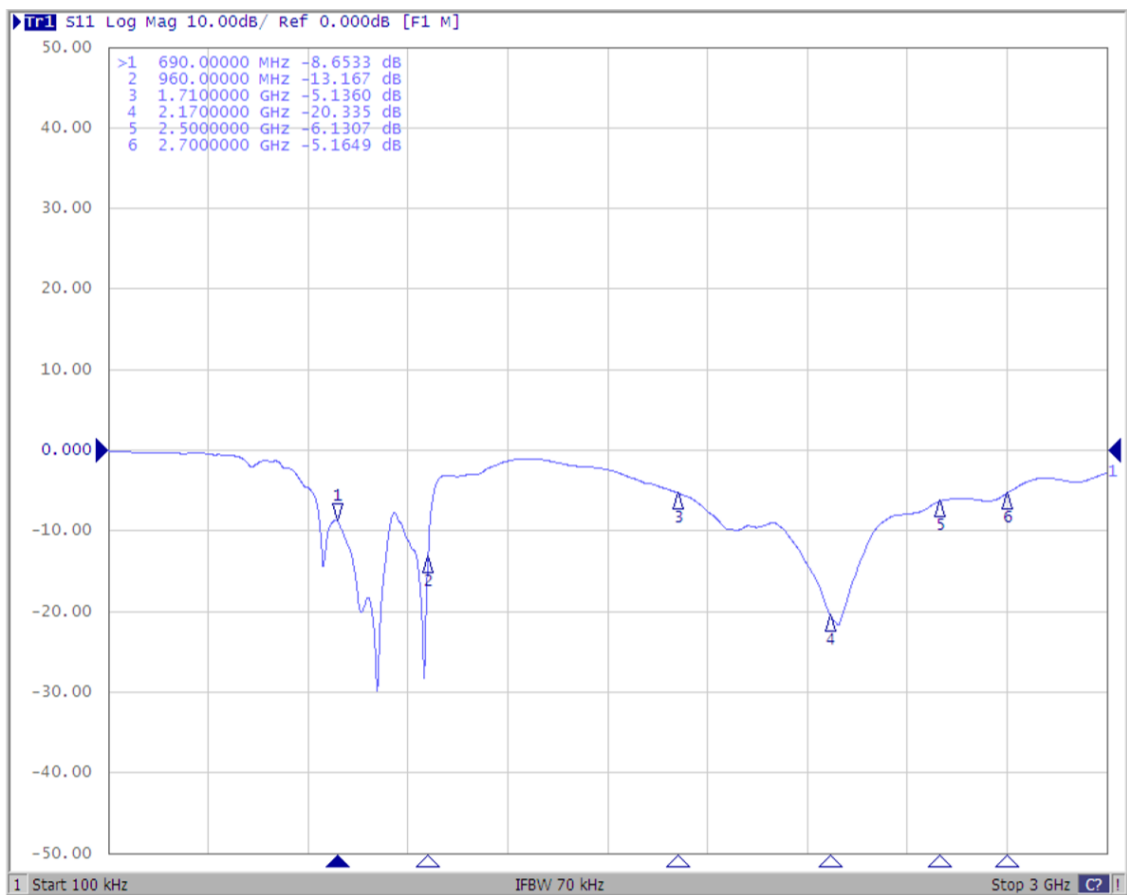


Unit: mm

VSWR [-] – Voltage standing wave ratio



S<sub>11</sub> [dB] – Return loss



Different connector variants or cable lengths are available on request.

CONTACTS

---

SECTRON s.r.o. Josefa Šavla 1271/12  
709 00 Ostrava 9, Czech Republic

WWW.SECTRON.CZ  
Tel.: +420 556 621 021